

# ASIMETO Indicator/Mag Base Kit

Kit contains:

- 7602031 (Articulated arm magnetic base)
- 7402261 (0-1" x 0.001" AGD2 dial indicator)

**Code No: 500-730**

Regular List: \$226.40

**\$142.65**



Distributed by:



***E.M. PRECISE TOOL Ltd.***

**CUTTING TOOLS • PRECISION TOOLS • COOLANTS**

216A Arvin Avenue Stoney Creek, Ontario, Canada L8E 2L8

P: 1.905.664.2644 • TF: 1.800.267.7569 • EMAIL: [info@emprecise.com](mailto:info@emprecise.com)

Pricing valid while quantities last or until further notice.

**SOWA**  
METALWORKING SOLUTIONS



Sowa Tool & Machine Co. Ltd.  
500 Manitou Drive  
Kitchener, Ontario  
N2C 1L3

Western Canada Branch  
9649-49th Ave  
Edmonton, AB  
T6E 5Z5

Toll Free: 1-800-265-8221  
Phone: (519) 748-5750  
Fax: (519) 748-9304  
[sales@sowatool.com](mailto:sales@sowatool.com)  
[www.sowatool.com](http://www.sowatool.com)



**Canadians Supporting Canadians**

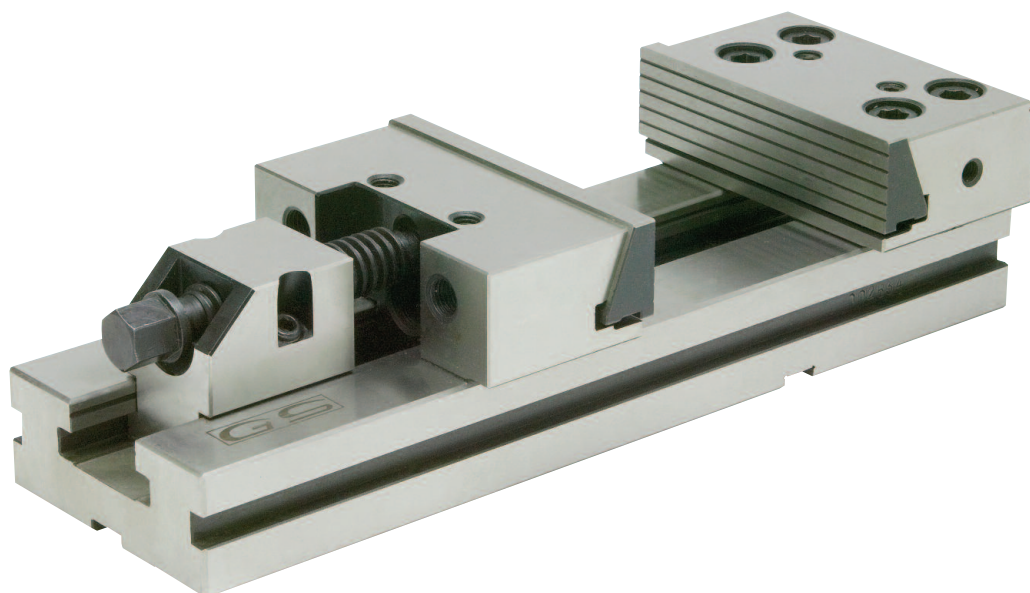


# Plain Base Modular Vises

Manufactured under rigid quality control. As a result of the high standard construction, GS Vises can be depended upon to maintain their accuracy under the most severe operating conditions. The modular design and the concept of interchangeability makes possible a wide variety of set up combinations.

## Features/Benefits:

- High accuracy
- Unlimited clamping range
- High quality alloy steel
- High clamping pressure
- No jaw lift
- All vises are matched



Model	Jaw Width	Opening	Jaw Height	Code No.	List \$	SALE \$
3	6"	8"	2"	382-015	1,206.10	<b>930.00</b>
3	6"	12"	2"	382-017	1,408.00	<b>1,120.00</b>

Distributed by:



## **E.M. PRECISE TOOL Ltd.**

**CUTTING TOOLS • PRECISION TOOLS • COOLANTS**

216A Arvin Avenue Stoney Creek, Ontario, Canada L8E 2L8

P: 1.905.664.2644 • TF: 1.800.267.7569 • EMAIL: [info@emprecise.com](mailto:info@emprecise.com)

Pricing valid while quantities last or until further notice.

**SOWA**  
METALWORKING SOLUTIONS



Sowa Tool & Machine Co. Ltd.  
500 Manitou Drive  
Kitchener, Ontario  
N2C 1L3

Western Canada Branch  
9649-49th Ave  
Edmonton, AB  
T6E 5Z5

Toll Free: 1-800-265-8221  
Phone: (519) 748-5750  
Fax: (519) 748-9304  
[sales@sowatool.com](mailto:sales@sowatool.com)  
[www.sowatool.com](http://www.sowatool.com)



**Canadians Supporting Canadians**