

PROMO 2020

March 15, 2020 Till July 31th, 2020

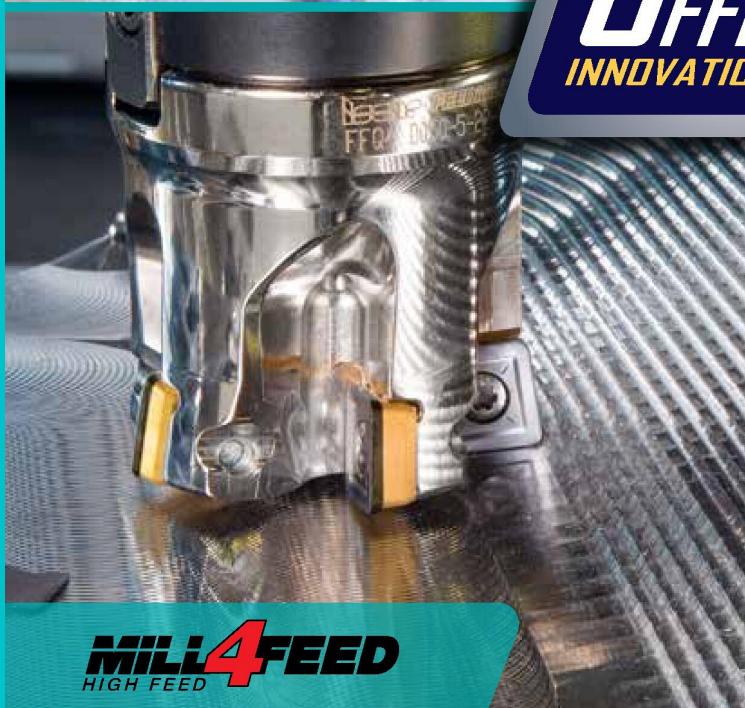
SUMOCHAM
CHAMDRILL LINE



DO-GRIP
TWISTED 2-SIDED



**SPECIAL
OFFERS**
INNOVATION 2020



MILL4FEED
HIGH FEED



TANG-GRIP
300 LINE



E.M. PRECISE TOOL LTD.

**MACHINING IN INDUSTRY 4.0
INTELLIGENTLY**

Member IMC Group
iscar
www.iscar.com

**Helical Indexable
Multi-Toothed Endmill for
90° Shoulder Milling**



High Positive
Rake



Performs
90° Shoulder



Cost Effective
Insert



Purchase

10 HM390 TCKT/TCCT 07
or TPKT/TPCT 10 Or TDKT/TDCT 15...
Inserts per pocket

Receive

Corresponding Cutter
(HM390 ETC/ETP/ETD or FTC/FTP/FTD...) up to 125 mm

Free of Charge



**Double-Sided Rectangular Inserts
with 4 Helical Cutting Edges**
90° Shoulder Milling



Tangential
Clamping



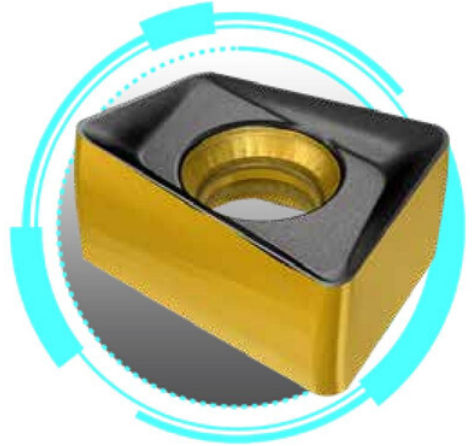
Double Sided
Insert



Performs
90° Shoulder



Very Strong and
Durable Insert



Purchase

10 H490 ANKX/ANCX 09/12/17 Inserts per pocket

Receive

Corresponding Cutter
(H490 E90AX/F90AX...-09/12/17) up to 125 mm

Free of Charge



**Square Single-Sided Inserts
with 4 Cutting Edges
for Fast Feed Milling**



Reinforced
Insert Radius



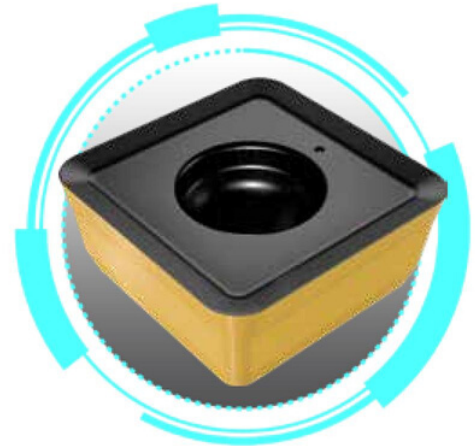
For Stainless Steel,
Cast Iron
& Exotic Materials



Positive Insert
Positioning



Interrupted Cut



Purchase

10 FFQ4 SOMT 09/12/17...
Assorted Inserts per pocket

Receive

Corresponding Cutter
(FFQ4 D...09/12/17) up to 125 mm

Free of Charge



**Extra Strong Tangential Inserts
for a wide Variety of Tools Provide
Longer tool life and Highest Productivity**



Performs
90° Shoulder



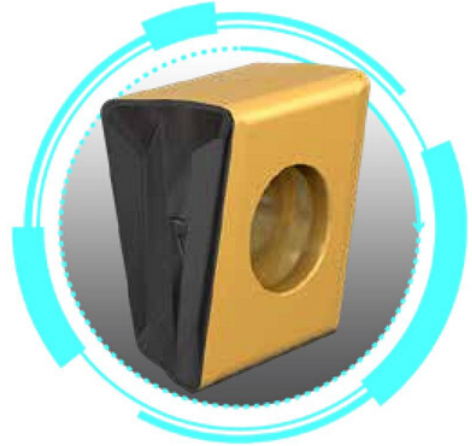
High
Productivity



Variety of
Geometries



Cost Effective
Insert



Purchase

10 T490 LNMT/LNHT 08/13/16
Assorted Inserts per pocket

Receive

Corresponding Cutter
(T490 ELN/FLN...-08/13/16) up to 125 mm

Free of Charge



ISCAR's Single-Ended Insert for Parting, with an Improved Clamping Method



Rigid Clamping



Extra High
Feed



Ease of Use



Cost Effective
Insert



Purchase

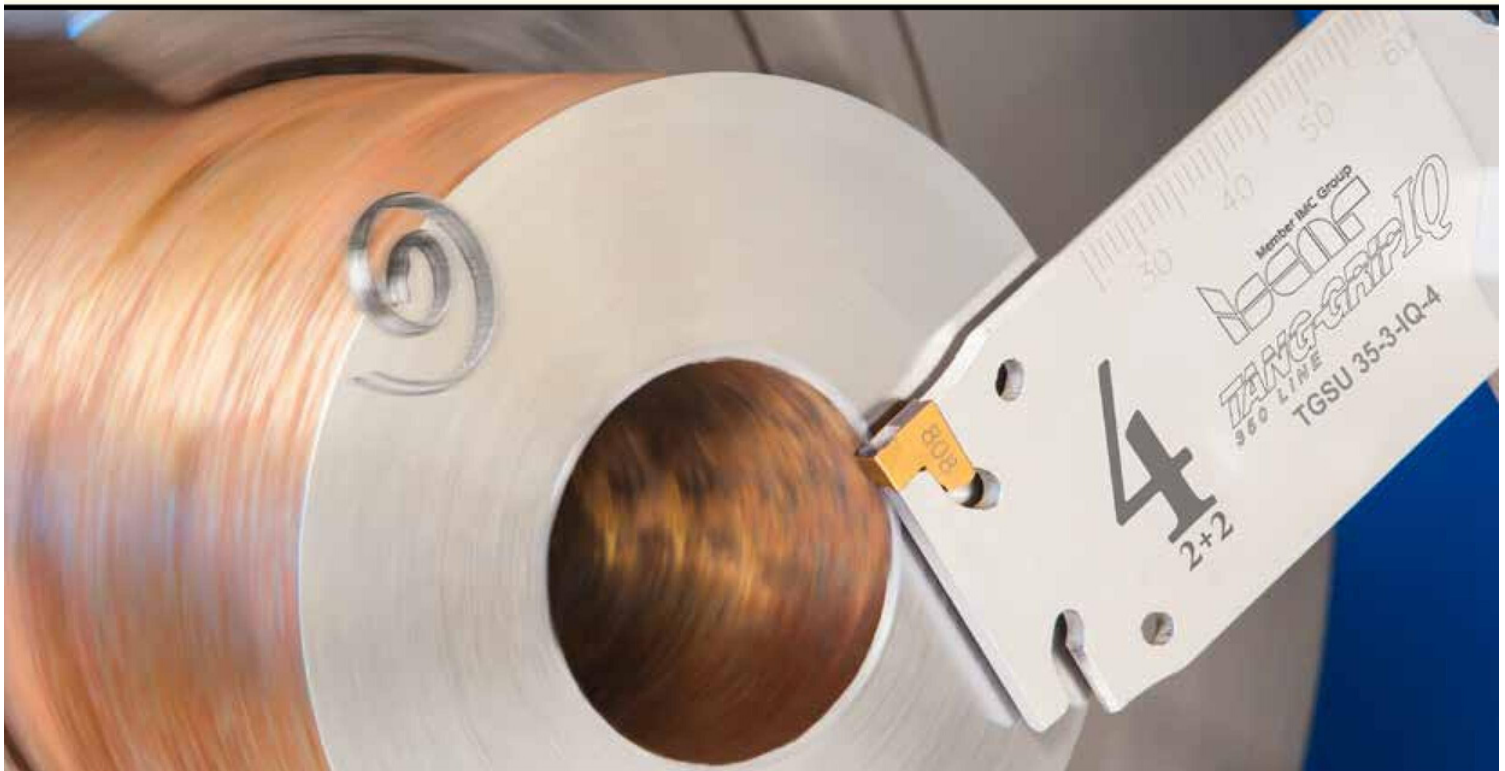
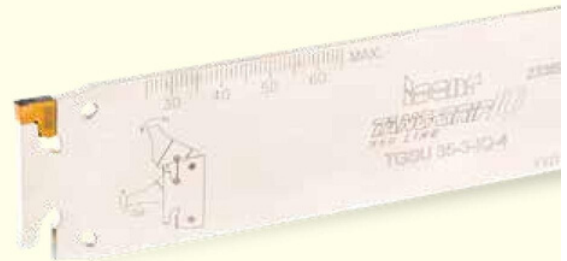
20 TAG Inserts,
choose from widths 1.4-5 mm

Receive

Corresponding Blade
TGFH 26/32 or TGSU 35

Free of Charge

*JHP holders are not included



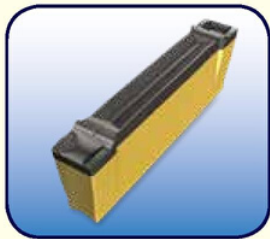
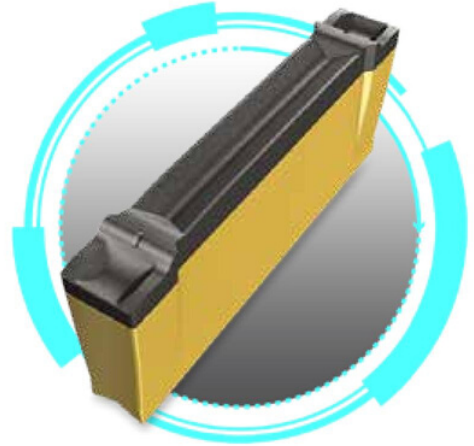
**The One and Only Double-Sided
Twisted Parting Insert
with no Depth of Cut Limitation**



Ease of Use



Cost Effective
Insert



Purchase

20 DGN/R/L Inserts choose from widths 1.4-5 mm

Receive

Corresponding Blade DGFH 26/32

Free of Charge

*JHP holders are not included



3 Effective Cutting Edges Dia 12-25.9 mm **Drilling Master**



Self Centering
Insert



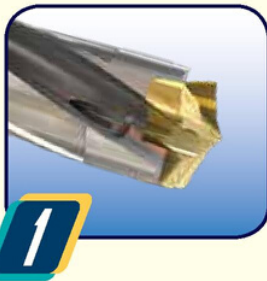
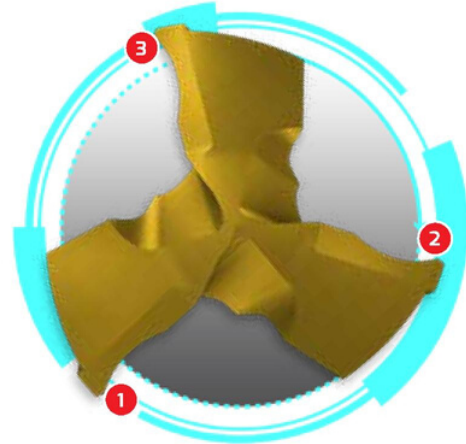
for Steel &
Cast Iron



High
Productivity



Cost Effective
Insert



Purchase

4 H3P... Assorted Inserts, choose
from widths 12-23.9 mm

Receive

Corresponding D3N... Drill Body Up to 3XD

Free of Charge



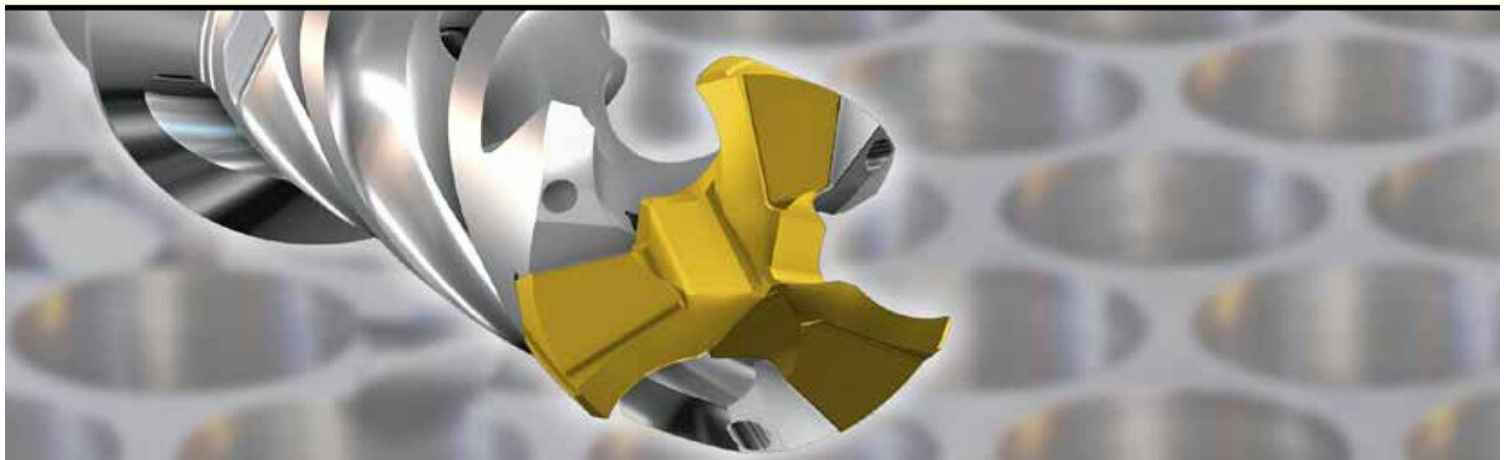
Purchase

6 H3P... Assorted Inserts, choose
from widths 12-23.9 mm

Receive

Corresponding D3N... Drill Body Up to 5XD

Free of Charge



ISCAR's SUMOCHAM Drill
Family **Improves Productivity**
in hole Making Applications



High
Productivity



For Every Type
of Material



Variety of
Geometries



Cost Effective
Insert



Purchase

4 ICP / ICK / ICM / HCP / FCP / ICG / QCP
Assorted Inserts choose from widths 4 mm-32.9 mm

Receive

Corresponding DCN / DCNS
Drill Body Up to 3XD

Free of Charge



Purchase

6 ICP / ICK / ICM / HCP / FCP / ICG / QCP
Assorted Inserts choose from widths 4 mm-32.9 mm

Receive

Corresponding DCN / DCNS
Drill Body Up to 5XD

Free of Charge



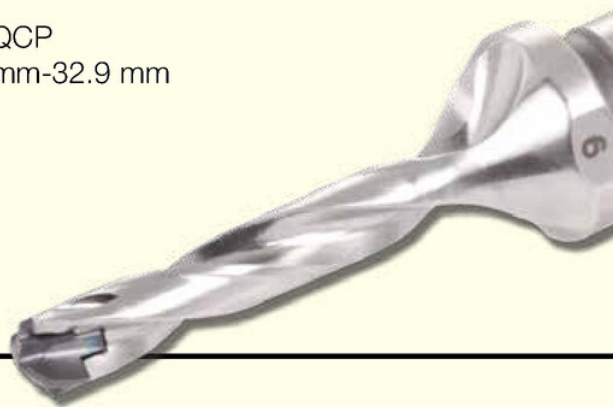
Purchase

8 ICP / ICK / ICM / HCP / FCP / ICG / QCP
Assorted Inserts choose from widths 4 mm-32.9 mm

Receive

Corresponding DCN / DCNS
Drill Body Up to 8XD

Free of Charge



Become an **INDUSTRY 4.0 Master!**



ISCAR's Easy to Use **Digital World of Applications**

Web Apps



E.M. PRECISE TOOL LTD.

216A ARVIN AVENUE, STONEY CREEK, ON L8E 2L8

T: (905) 664-2644 | F: (905) 664-5504 | TF: 1 (800) 267-7569

info@emprecise.com | www.emprecise.com

